

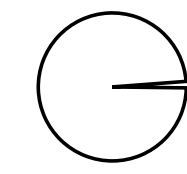


CENTRAL TREE CARE LTD

TREE PROTECTION PLAN MUST BE READ IN CONJUNCTION WITH ARBORIST REPORT PREPARED BY CENTRAL TREE CARE LTD. ALL REMIANING TREES PLOTTED ON THIS SITE PLAN ARE UNDERSIZED NON-PERMIT TREES OR EXCEED A DISTANCE OF 6 METERS AWAY FROM THE SUBJECT PROPERTY DATED November 4, 2022

Legend

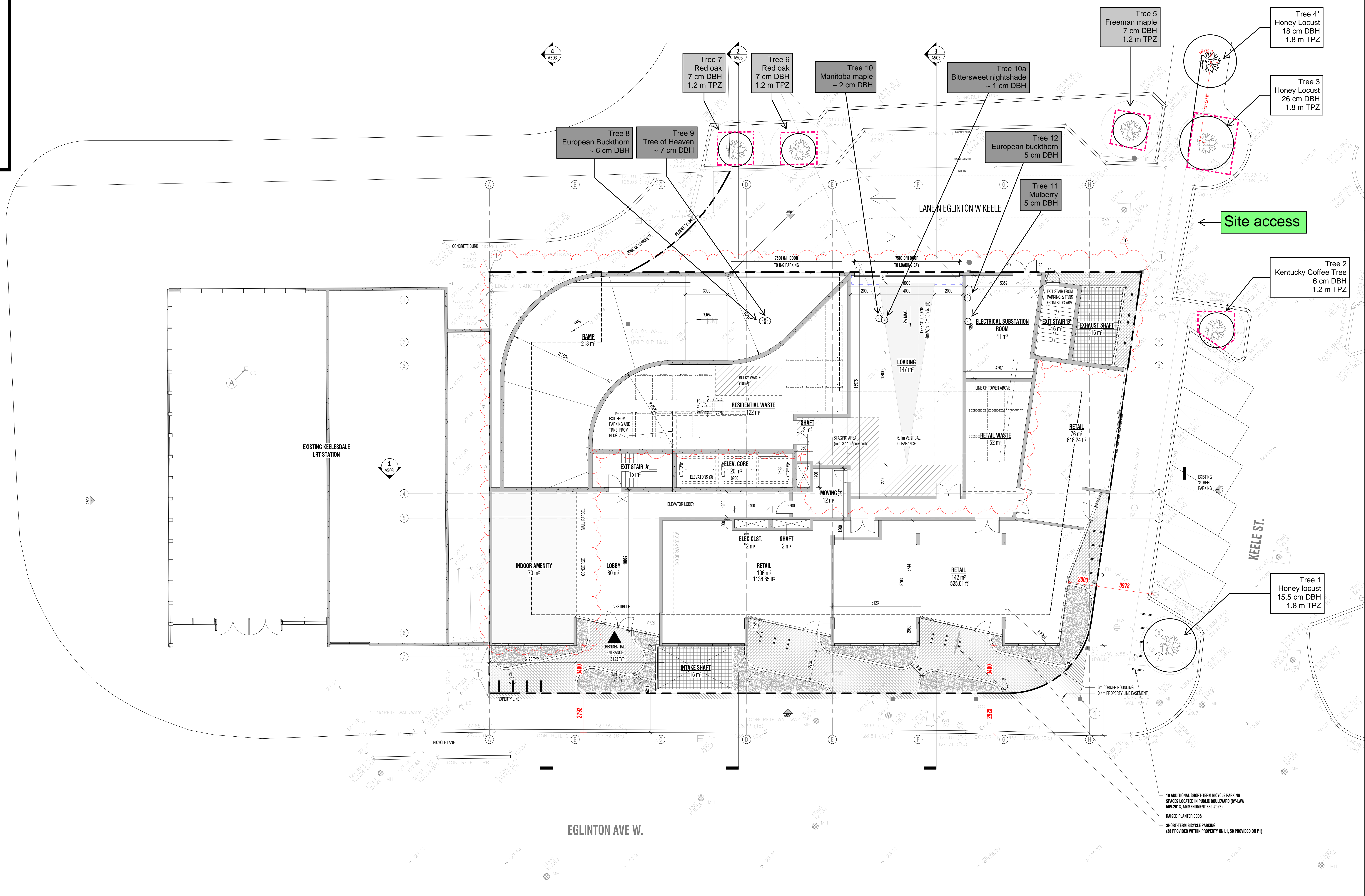
TPZ of fully protected permit sized tree



Snow-fence tree protection hoarding



TRETHEWEY DR.



10 ADDITIONAL SHORT-TERM BICYCLE PARKING SPACES LOCATED IN PUBLIC SQUARE (BY-LAW 569-2013, AMENDMENT 630-2022)
RAISED PLANTER BEDS
SHORT-TERM BICYCLE PARKING (30 PROVIDED WITHIN PROPERTY ON L1, 50 PROVIDED ON P1)

Copyright © 2022 of the Architect. Any version of this drawing reproduced by any means from any media without prior written approval of the Architect is to be used for information only. The Architect will not be held liable for any loss or damage of information resulting from subsequent reproduction of the original drawing.

GENERAL NOTES:
1. Drawings are not to be scaled. Contractor will verify all existing conditions and dimensions required to perform the Work and will report any discrepancies with the Contract Documents to the Architect before commencing work.
2. The Architectural Drawings are to be read in conjunction with all other Contract Documents including the Project Manual and the Specifications. In the event of a discrepancy between the Contract Documents, the Specifications and the Architectural Drawings, the Specifications shall prevail. In the event of a discrepancy between the Specifications and the Contract Documents, the Specifications shall prevail. In the event of a discrepancy between the Specifications and the Contract Documents, the Specifications shall prevail.
3. Positions of existing or proposed Mechanical or Electrical Ductwork, Pipes, and Risers are indicated on the Architectural Drawings. Locations shown on the Architectural Drawings that govern over Mechanical and Electrical Drawings. Mechanical and Electrical drawings not clearly indicated will be located and directed by the Architect.
4. Dimensions indicated are taken between the faces of building surfaces unless otherwise noted.
5. The Architect has not been retained for supervision of construction and assumes no responsibility for means, methods and installation of construction.
6. These documents are not to be used for construction unless specifically noted for such purposes.

3	Oct. 26.22	Coordination
2	Oct. 6.22	Coordination
1	Sept. 29.22	Coordination
Rev.	Date	Issued

gh3*
2636 EGLINTON AVENUE WEST

TORONTO
Project North
North

SCALE: 1:100
PROJECT NO.: 202022
ISSUE DATE: OCT 26, 2022

GROUND FLOOR PLAN

A202