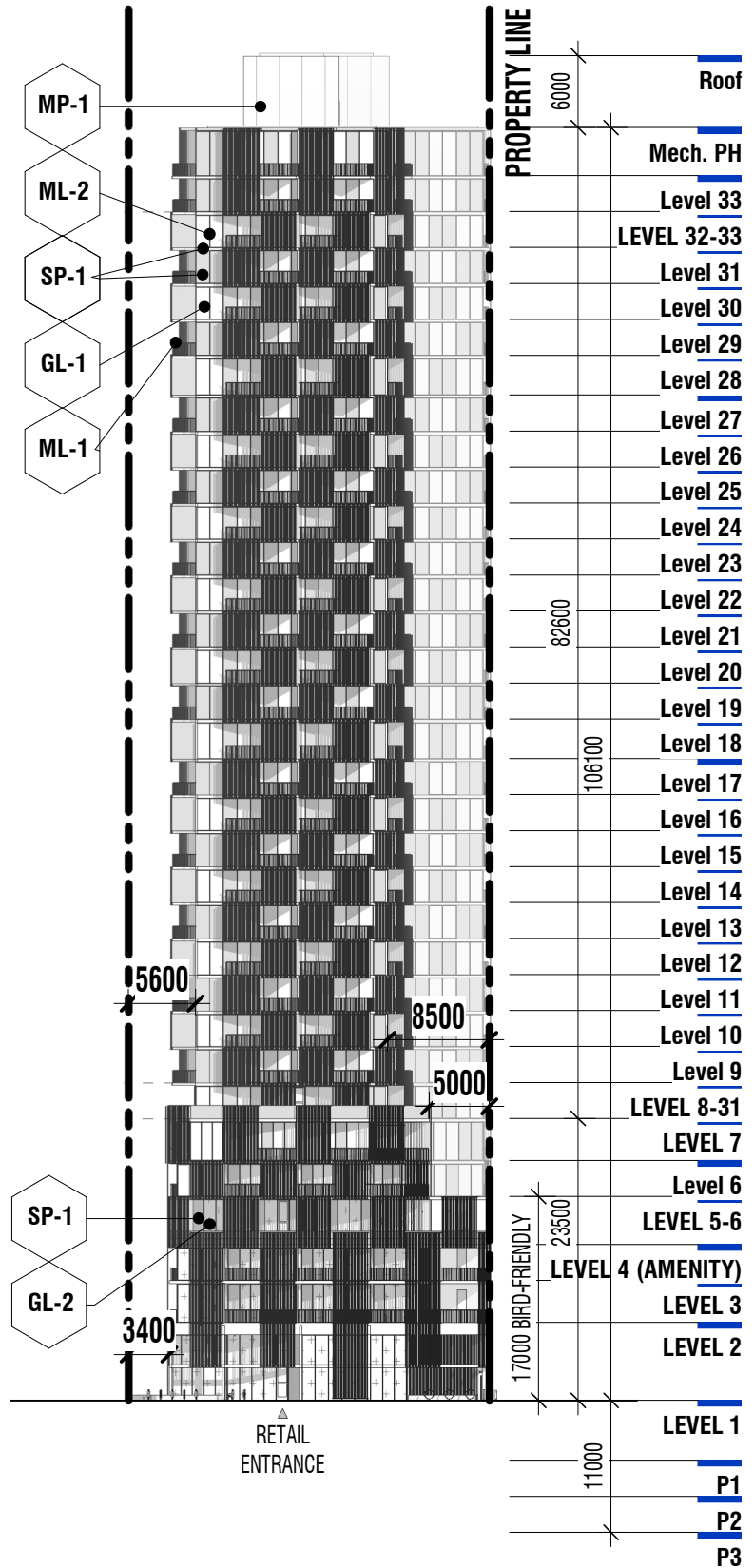


2634, 2636, 2640, 2642 & 2654 EGLINTON AVENUE WEST  
 AND 1856 & 1856A KEELE STREET  
 TORONTO, ONTARIO

Site Plan

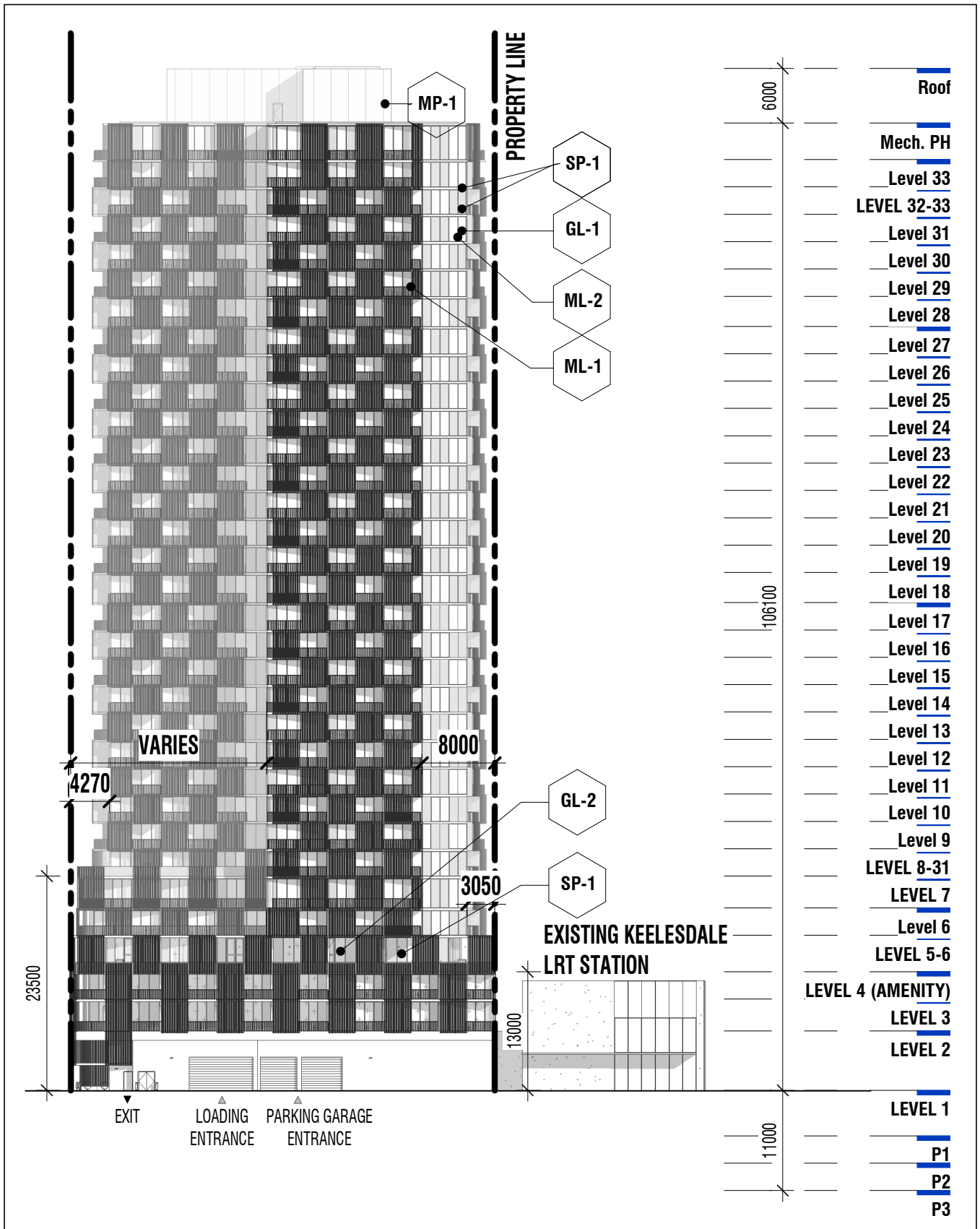
**MATERIALS LEGEND**

- C1 CONCRETE
- SP1 BRICK TEXTURED SOLID PANEL
- GL1 GLASS PANEL - NO FRIT
- GL2 GLASS PANEL - FRIT
- ML1 ALUMINUM, SOFT WHITE TONE
- ML2 ALUMINUM, LIGHT BRONZE TINT



**2634, 2636, 2640, 2642 & 2654 EGLINTON AVENUE WEST  
AND 1856 & 1856A KEELE STREET**  
TORONTO, ONTARIO

**East Elevation**

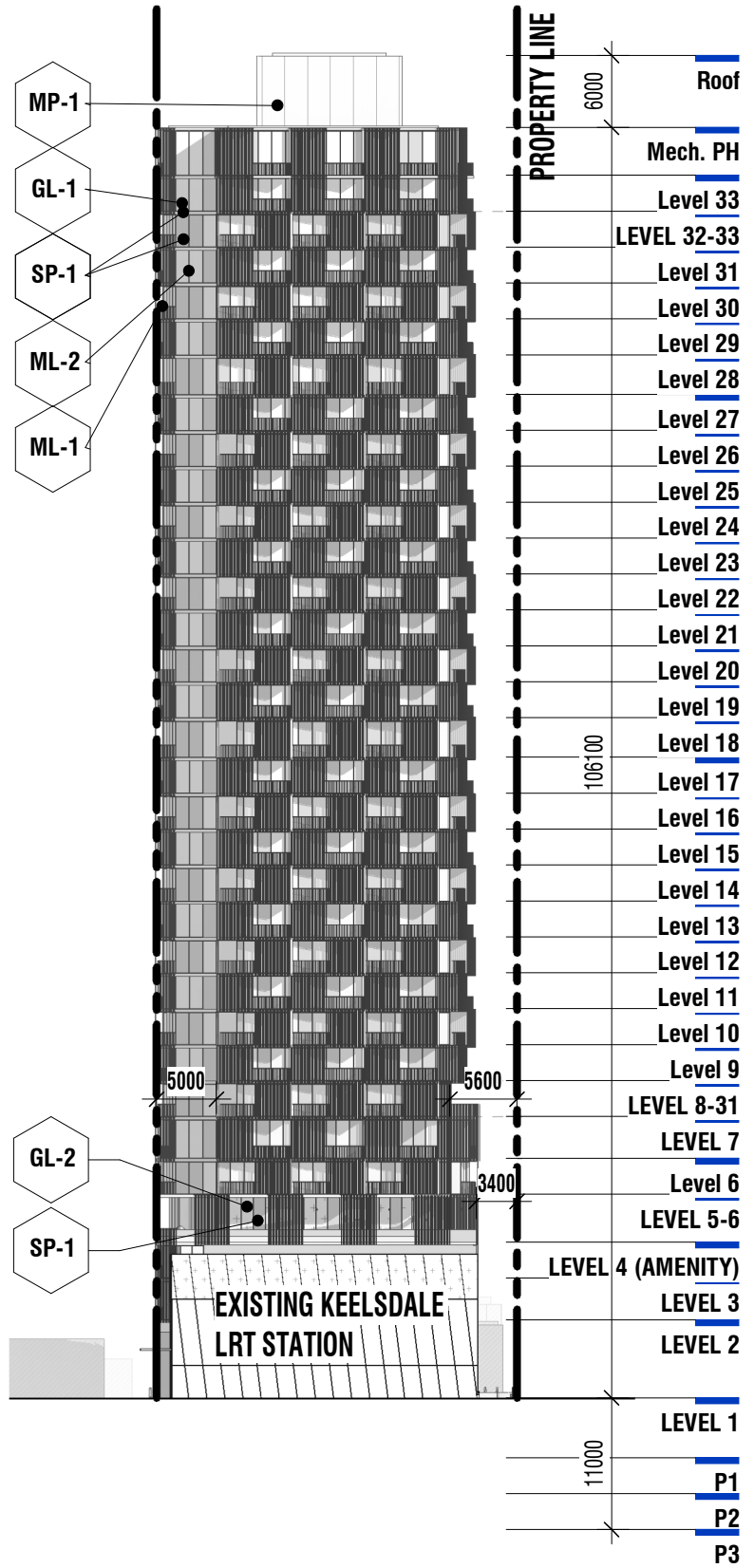


2634, 2636, 2640, 2642 & 2654 EGLINTON AVENUE WEST  
 AND 1856 & 1856A KEELE STREET  
 TORONTO, ONTARIO

North Elevation

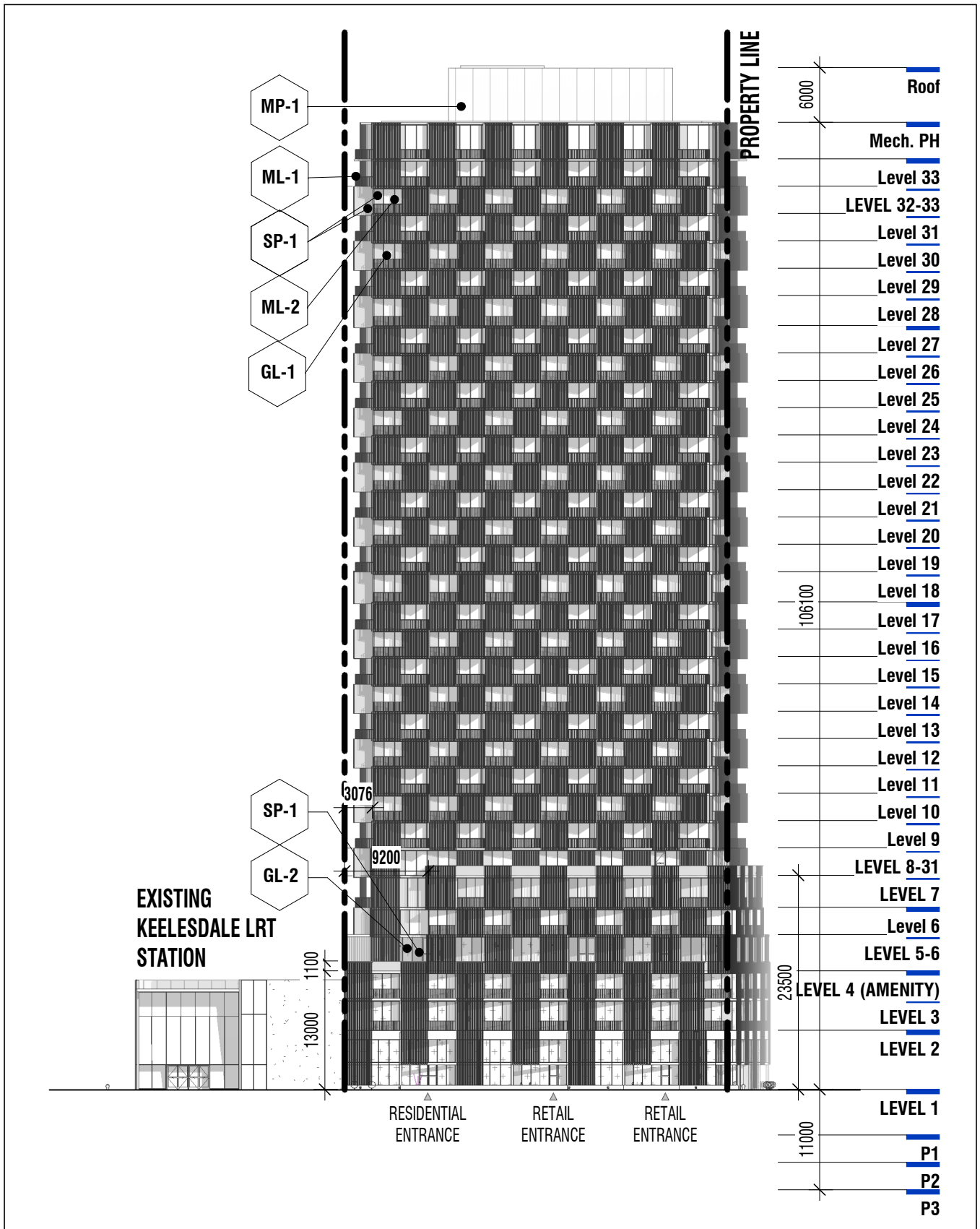
**MATERIALS LEGEND**

- C1 CONCRETE
- SP1 BRICK TEXTURED SOLID PANEL
- GL1 GLASS PANEL - NO FRIT
- GL2 GLASS PANEL - FRIT
- ML1 ALUMINUM, SOFT WHITE TONE
- ML2 ALUMINUM, LIGHT BRONZE TINT



2634, 2636, 2640, 2642 & 2654 EGLINTON AVENUE WEST  
 AND 1856 & 1856A KEELE STREET  
 TORONTO, ONTARIO

**West Elevation**



2634, 2636, 2640, 2642 & 2654 EGLINTON AVENUE WEST  
 AND 1856 & 1856A KEELE STREET  
 TORONTO, ONTARIO

## South Elevation